

INTIMATE DETAILS SHOW LOVE



Soft And Comfortable Material

Light and soft, circulating and breathable, easy to dry after water, strong and durable, good impact resistance and cushioning effect

Can Be Placed Breathable And Quick Drying

It is breathable and quick drying. After use, it is washed with clean water and dried in the air. It is safe, tasteless, uniform particles, good resilience, water-proof and hygienic

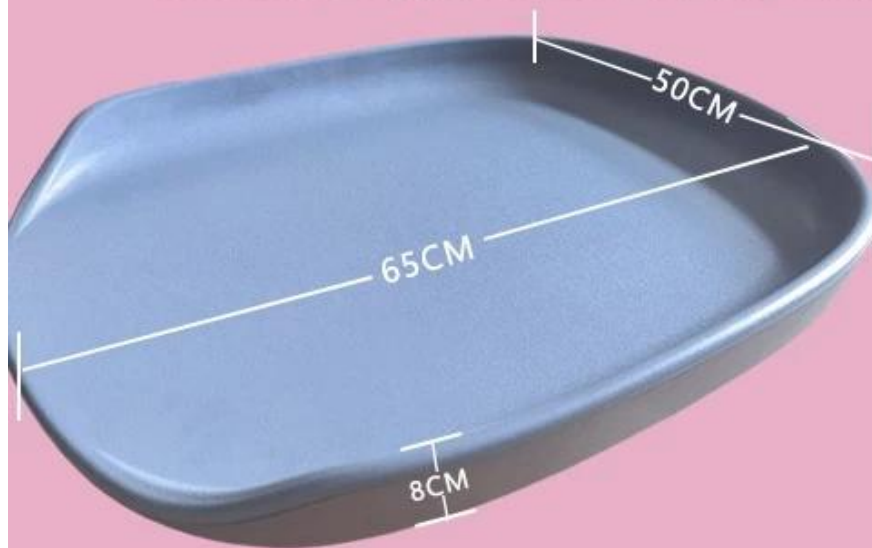


Skin Friendly Suspension Skin Friendly Without Harm

Soft and comfortable, prevent the baby from collision, better protect the baby's tender spine, exquisite technology, strong and durable, and long service life

Smooth lines fit your baby's spine

Reasonable support and care for baby's tender spine



PRODUCT PARAMETERS



Name: Finehope

Material Science: polyurethane

Season: all seasons

Dimensions: custom size

Sign: custom logo

Applicable space:

bathroom, indoor and outdoor, living room, children's room, outdoor, baby care room

FREEING HANDS · SLEEPING ARTIFACT

Portable anti pressure machine
Available four seasons universal bed middle bed



By imitating the bionic design held by the mother, the newborn's sense of contact and comfort is greatly strengthened and the baby's sleep quality is improved

REASONS FOR CHOOSING US

Skin friendly material, comfortable and breathable, soft touch, take care of baby's delicate skin

security environment protection

It is made of environment-friendly material Pu and double-layer anti-skid cloth. Mothers can use it at ease

soft comfortable

The fabric is comfortable and made of baby skin friendly fabric, which can make the baby's comfort better

enlarge elastic force

The baby is more comfortable and safer to lie down. It is suitable for both obesity and lightness

convenient use

When not in use, you can fold it up and put it in the cabinet, under the sink, or hang it on the wall, which saves space and is convenient to carry when traveling



PORTABLE PRESSURE PROOF CRIB

soft / convenient / safe and tasteless



[Finehope](#) [Purifier](#) [Purifier](#)

COMPANY PROFILE



ABOUT US

19 years production experience on PU molded foam products

10000m²
Factory area

6000 tons
Annual output

32 sets
Large-scale equipment

130 million
Annual sales

Finehope has an annual output of 6,000 tons, has 32 large-scale equipment, and 12 independent research and development and manufacturing automatic assembly lines. Finehope's advantage is from the research and development of raw materials and formulas to the independent completion of mold design and manufacturing.

Cooperative customers include Fortune 500 companies such as Caterpillar and Honeywell. Finehope has obtained ISO9001, IATF16949 and FDA certificates.

Perfect production system



R & D Department



Trimming Deflashing



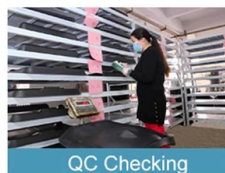
Painting



QC / Acceptance Standard



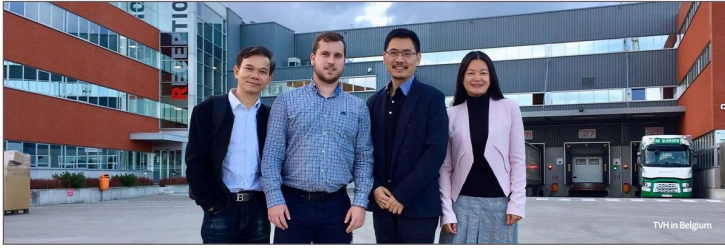
QC Checking



QC Checking

19 YEARS PRODUCTION EXPERIENCE ON PU MOLDED FOAM PRODUCTS

CUSTOMER VISIT



19 YEARS PRODUCTION EXPERIENCE ON PU MOLDED FOAM PRODUCTS

ATTEND THE EXHIBITION



19 YEARS PRODUCTION EXPERIENCE ON PU MOLDED FOAM PRODUCTS

PROFESSIONAL CERTIFICATION



19 YEARS PRODUCTION EXPERIENCE ON PU MOLDED FOAM PRODUCT

SAMPLE SHOW



Global polyurethane PU customization

CONTACT US



CONSULTING SERVICE



PACKAGING DESIGN



DRAWINGS CONFIRM



PAYMENT



DELIVERY ON TIME



QUICK CUSTOMIZATION
RENDERINGS AND QUOTATIONS



VISIT THE STORE HOMEPAGE TO LEARN MORE

