

PU Polyurethane Urethane PUR PIR Foam Foaming Moulded Moulding Molding Self-skinning
Integral Round sleeve Parts

Material: PU

MOQ:100

Size: 68*61*25mm

Color: black

Payment method: T/T 30% before production, 70% before shipment

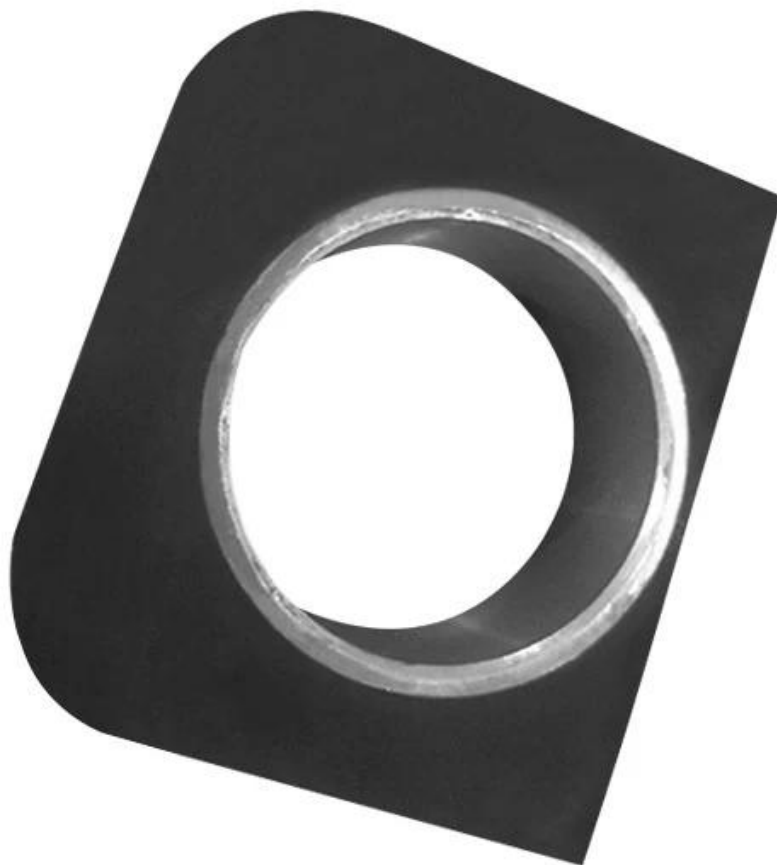
Packaging: carton packaging, also customizable

Customized service: size, color and style can be customized

Delivery time: about 30 days after receiving the deposit

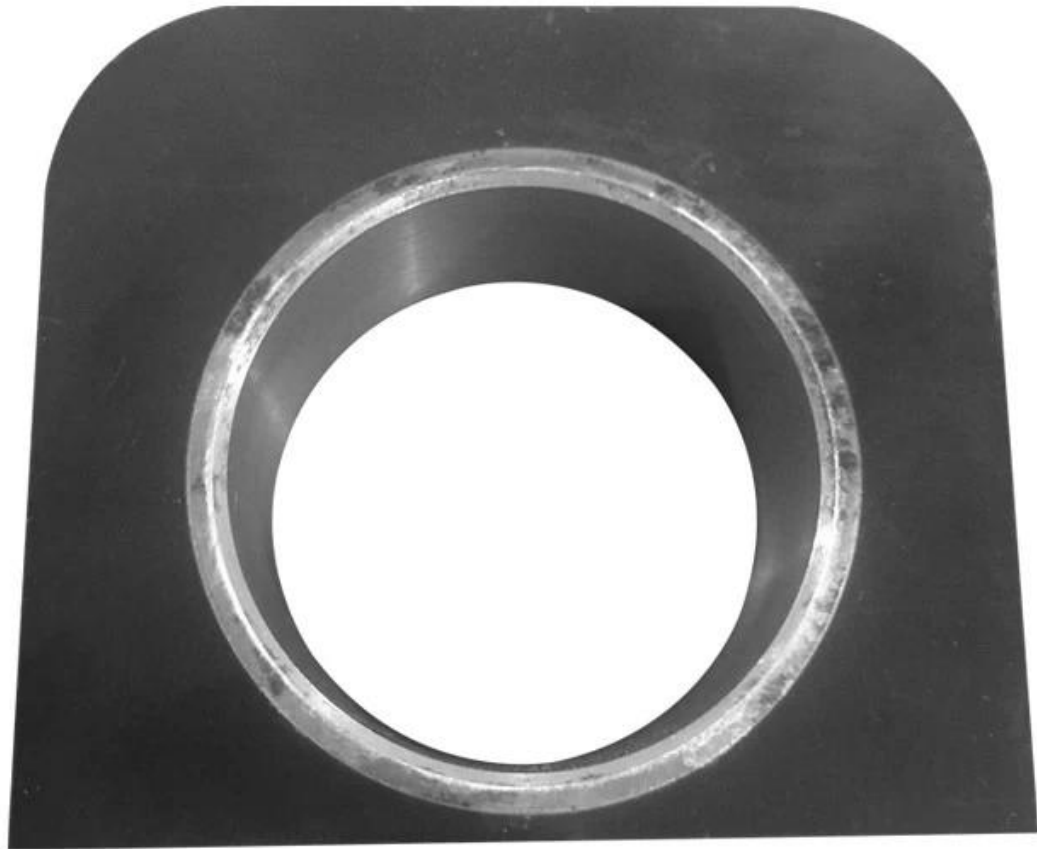


This product is customized for
the customer, not for sale





This product is customized for
the customer, not for sale



"One Stop" OEM/ODM Service For 20 Years Between *Finehope* And Fortune 500 Customers



As one of the top 500 enterprises in the world, Caterpillar is a world leading manufacturer of construction machinery, mining equipment, diesel and natural gas engines, industrial gas turbines and diesel electric locomotives.
From 2011, Finehope and Caterpillar began to cooperate to provide Caterpillar with mudguards for construction vehicle rollers.



As the largest forklift spare parts and second-hand forklift supplier in Europe, TVH provides different types of forklift spare parts for countries around the world.
From 2012, Finehope provided more than 100 kinds of forklift accessories for TVH.



Honeywell

Honeywell is one of the top 500 high-tech enterprises in the world. It provides the world with customized aviation products and services, building and industrial control technologies, and characteristic materials. It is committed to connecting everything from aircraft, cars, buildings, factories, supply chains, and workers, so that the world can achieve a more intelligent, safe, and sustainable long-term development.
From 2019, Finehope provided Honeywell with rollers for airport and other logistics conveyor belts.



STIGA

Stiga Group is a leading European manufacturer and distributor of lawn mowers and various electric garden tools, distributing and selling its products in more than 70 countries/regions around the world.
From 2013, Finehope provided various types of lawn mower seats and steering wheel products for Stiga.



Certificate of Honor



Cooperative Partner



Finehope Automatic Production Equipment



KRAUSS MAFFEI
High Pressure Reaction Injection Molding
(RIM) Machine from Germany



Robot spray mould release agent and
injection PU raw material

Finehope Warehouse **Daily Throughput of 100,000 pieces**

